

ArtisJet[®]

Innovative brand in small sizes UV printers



artis pro V6

Instruction of spare parts

User Manual & Working Sections

2021

ABOUT THIS FILE

Thank you for spending your valuable time on reading this manual.

The contents herein will guide you through the whole procedures of the initial setup and working process of the **artisJet Workstation for artis Young A4 LED UV printer**.

It is for all the printer operators involved in the production process. This file must be handed over to any operator if there is any position replacement.

Please follow all the steps instructed in this manual.

TABLE OF CONTENTS

1 Power cable.....	4
2 USB cable.....	5
3 RIP V9.0 Software.....	6
4 Dampers.....	7
5 Waste ink cartridges.....	8
6 UV ink.....	9
7 Cleaning Liquid.....	10
8 Multi-mat/E-fixture.....	11
9 Print Head Data Cable.....	12
10 Wiper.....	13
11 Captop.....	14
12 Grease.....	15
13 None-woven Cloth.....	16
14 Gloves.....	17
15 Ink tubes.....	18
16 Syringe.....	19

INTRODUCTION

1 Power cable



There are different types depends on client's requirement and location.



Power Cable with British Standard Plug



Power Cable with EU Standard Plug



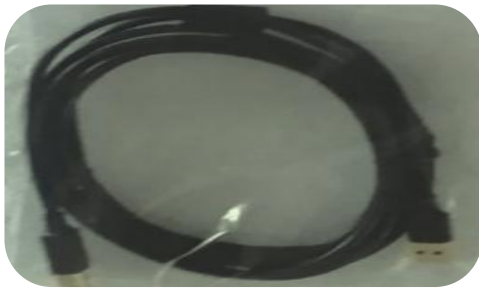
Power Cable with US Standard Plug



Power Cable with Chinese Standard Plug

2

USB cable



3

RIP V9.0 Software

RIP Software/Raster Image Processor software, focus on output quality and speed which is very popular in Color printing area.

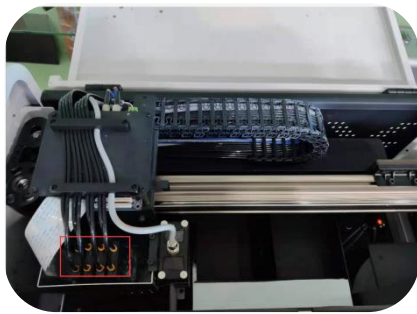
The blue dongle is key to run RIP V9.0 software without storage function.

Without dongle, the print file(prn) can not generated from RIP V9.0 software. Please keep dongle well without missing.



4 Dampers

This is consumable spare part and not covered under warranty. Recommend to replace every 3 months.
The dampers(4pcs/set) are used for filtering inks before ink following into print head nozzles.
The ink position is crossed into damper.



damper position



damper



No.1 No.2

5

Waste ink cartridges

This is consumable spare part and not covered under warranty.

a) The waste ink cartridges can be used repeatedly. But the waste ink level can not be recognized easily. Suggest replace new waste ink cartridges in time.

b) After setting up printer, remove the rubber stopper from top of waste ink cartridges.

It is to avoid ink leaking into printer once waste ink is full.

c) There is safety line tab on waste ink cartridges. Please empty waste ink under safety line.



remove rubber stopper



rubber stopper



safety line

6

UV ink

Non-accessory part, the quantity is according to order.

There are ink cartridges including white ink, yellow ink, cyan ink, black ink and cyan ink.

It is no need to refill ink with this kind of ink cartridges.

How to check ink level.

There are two ways to confirm ink level.

- a) Check the vacuum bag condition from top view of ink cartridges.
- b) Shake ink cartridges to confirm ink level.



7

Cleaning Liquid

Non-accessory part, the quantity is according to order.

Cleaning agent/liquid is to clean ink system parts, including ink tubes, ink bottles, bottom of printer head, printer head nozzles.



8

Multi-mat/E-fixture

Non-accessory part which depends on order.

Multi Mat has special adhesive function on both sides. One side sticks to the flatbed of printer. The other side can tightly hold any type of flat material, release easily when printing finished.

With proper care Multi Mat will last long time, it can be turned over and the bottom side offers a new surface and cleaned easily with transparent tape.



9

Print Head Data Cable

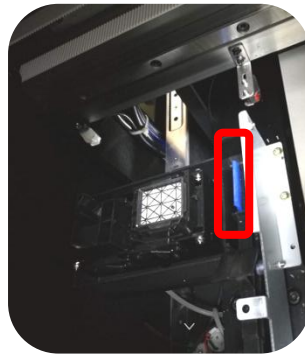
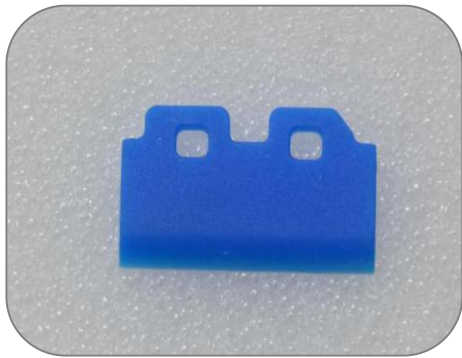
The print head data cables connect head board(carriage board) and printer head to transfer print data.
Recommend to replace if part is damaged.



10 Wiper

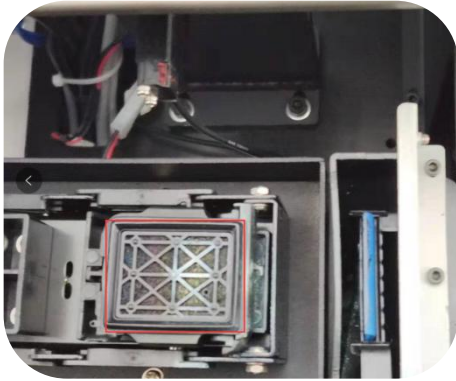
This is consumable spare part and not covered under warranty. Recommend to replace every 3-6 months to avoid wiper deformation.

The wiper is installed on wiper holder which used for wiping the printer head to avoid any extra inks remaining at the bottom of surface. Please refer to quarterly maintenance video for wiper replacement.



11 Captop

This is consumable spare part and not covered under warranty. Recommend to replace every 3-6 months to avoid Ink clogging on the captop.



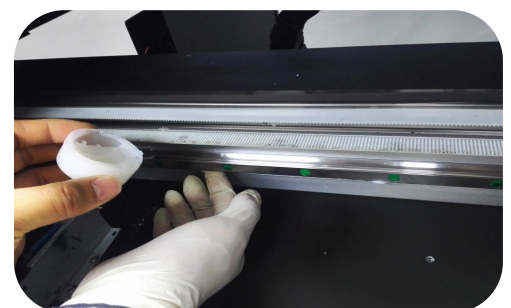
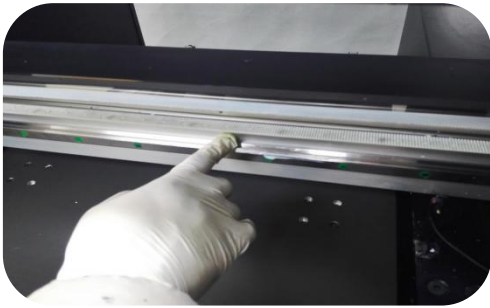
12 Grease

Lubricate carriage guiding bar weekly to reduce resistance and keep carriage movement smoothly during printing. The carriage guiding bar might be dirty with dust or sprayed inks after a period of printing.

1. Wipe the carriage guiding bar with soft cloth.
2. Lubricate grease on the carriage guiding bar.



10ml/box

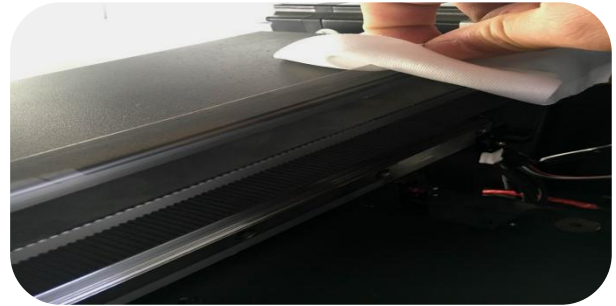


carriage guiding bar

13

None-woven Cloth

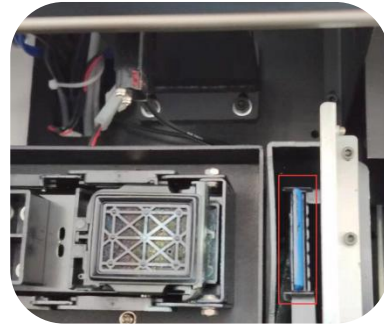
The none-woven cloth is used for cleaning Encoder Strip, wiper, captop, Print Head Bottom Surface, etc.



encoder strip



print head surface



wiper

14

Gloves

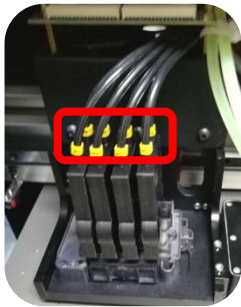
Tool for maintenance work.



15 Ink tubes

This is consumable spare part and not covered under warranty. Recommend to replace every 10 months.

Ink Tubes: 3mm*2mm (8 pcs)



16 Syringe

Tool for sucking Inks from dampers, ink tubes, waste ink tubes.
For example, how to suck ink from dampers for ink system checking.





Products Consulting



+86 158 1111 9658



info@artisjet.com

Technical Support



+86 186 1133 3892



ccc@artisjet.com

Sample Testing



+86 159 1024 3211



sample@artisjet.com